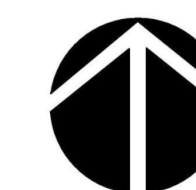
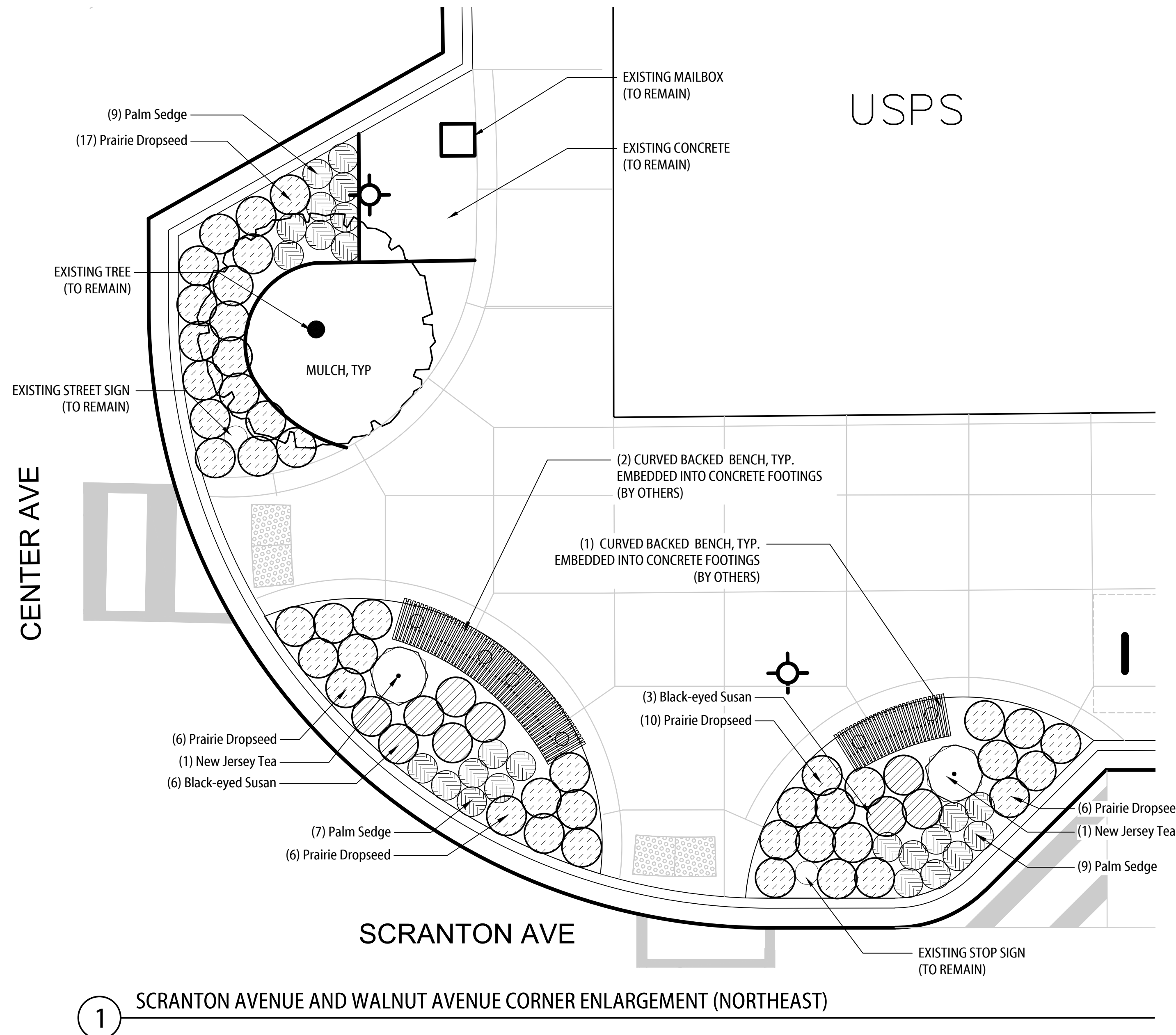


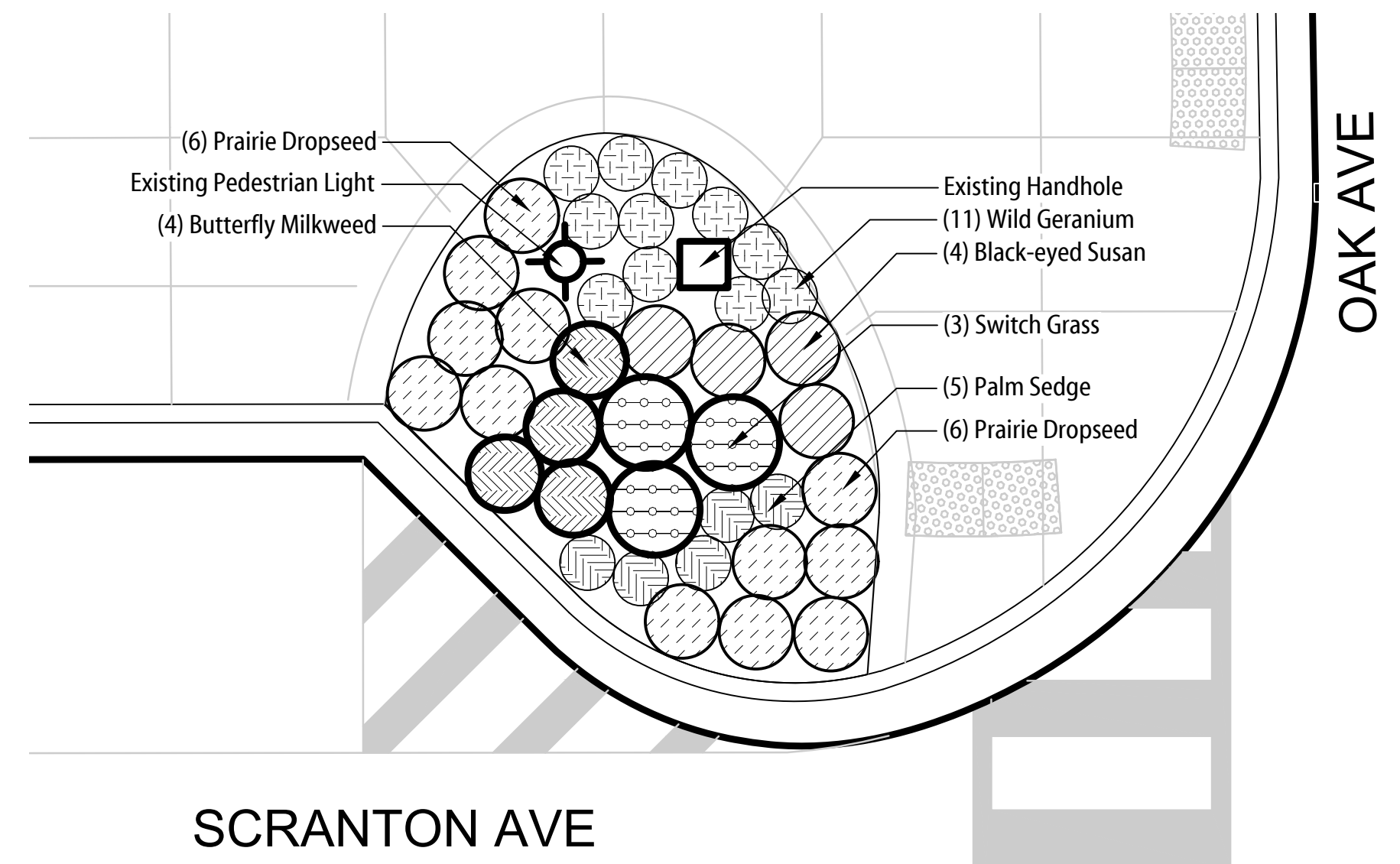
1 OVERALL PROJECT KEY PLAN / SITE PREPARATIONS PLAN



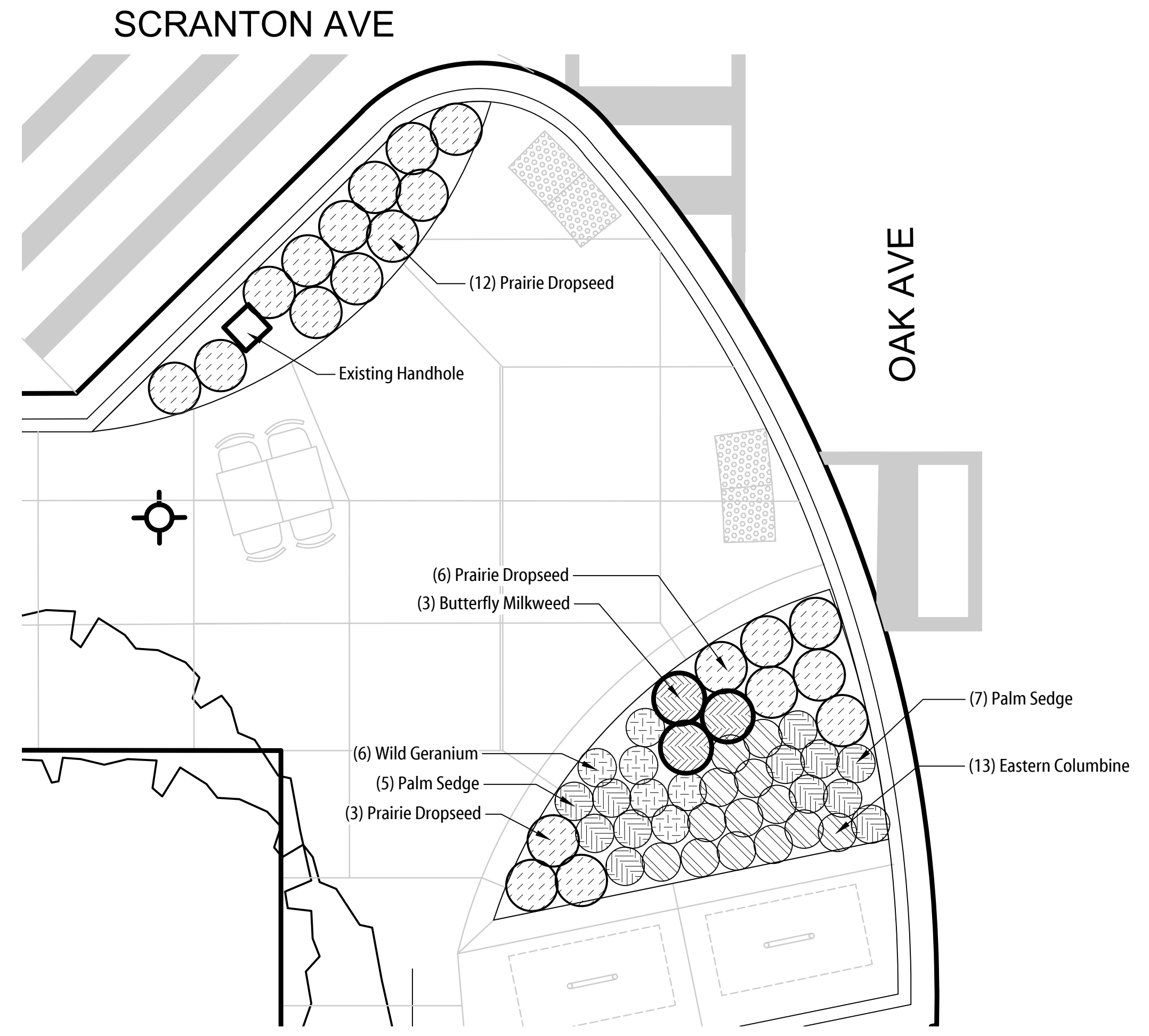




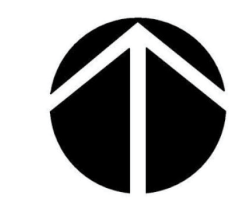
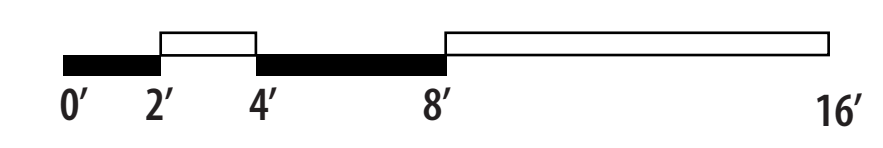
1 SCRANTON AVENUE AND WALNUT AVENUE CORNER ENLARGEMENT (NORTHEAST)



2 SCRANTON AVENUE AND OAK AVENUE CORNER ENLARGEMENT (NORTHEAST)



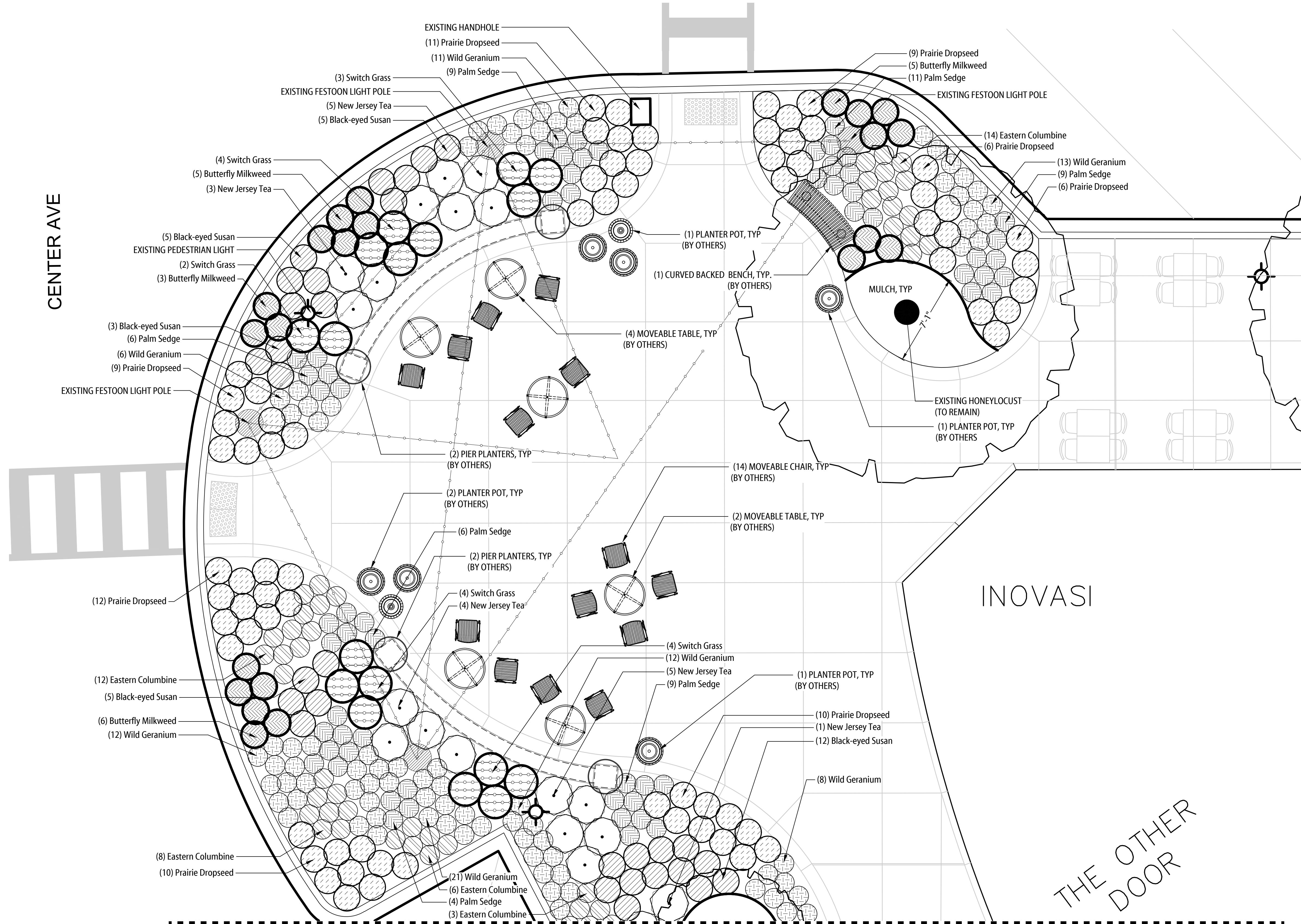
3 SCRANTON AVENUE AND OAK AVENUE CORNER ENLARGEMENT (SOUTHEAST)





SCRANTON AVE

CENTER AVE



INOVASI

THE OTHER DOOR

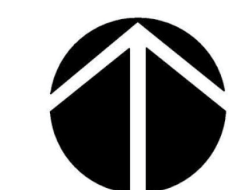
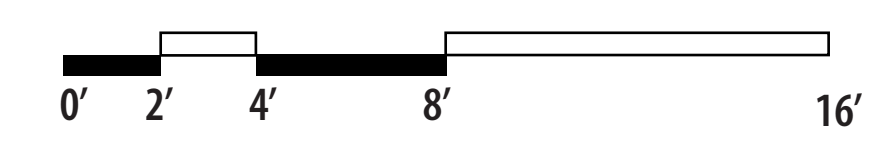
1

SCRANTON AVENUE AND CENTER AVENUE CORNER ENLARGEMENT

SEE SHEET L-03

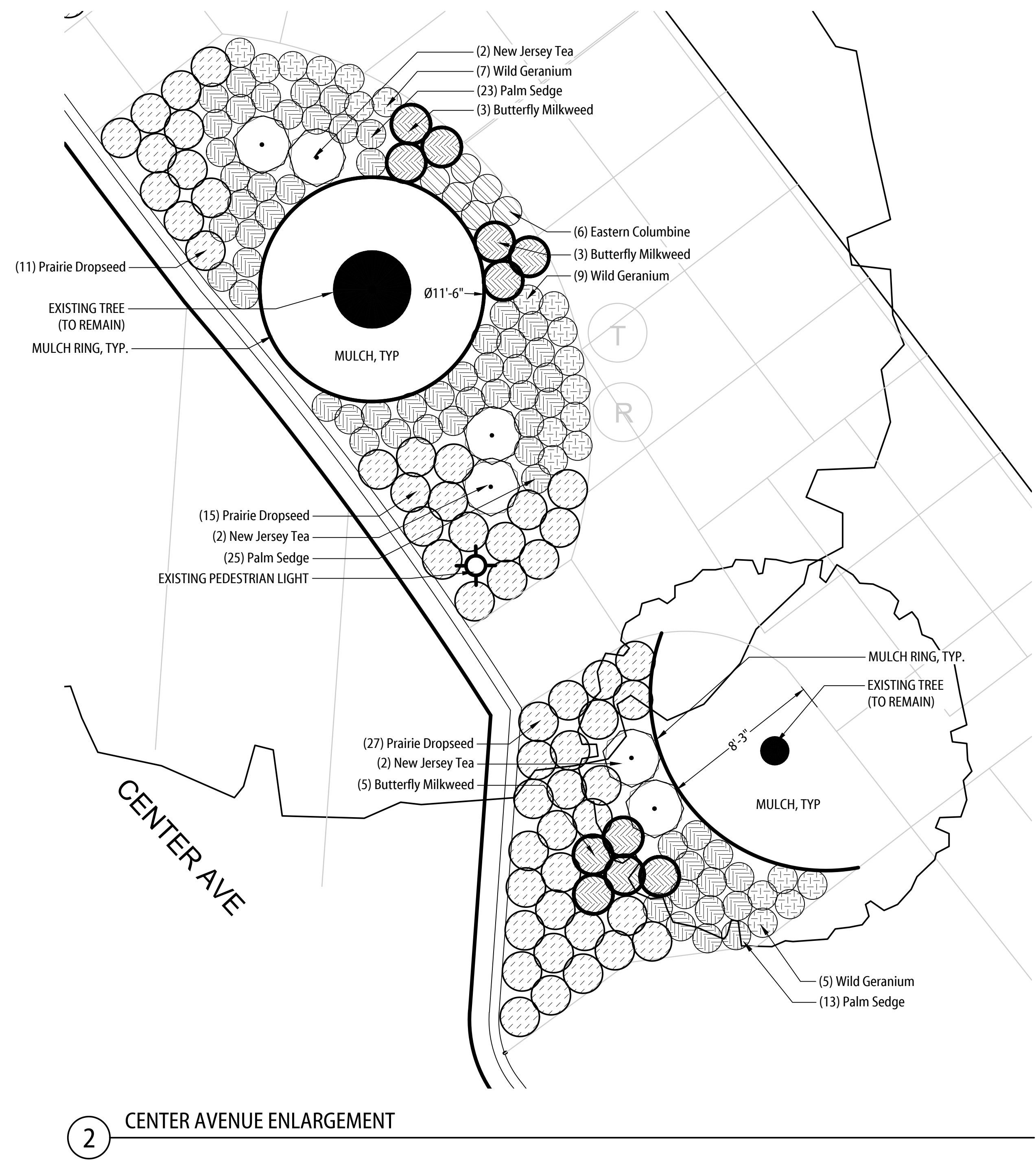
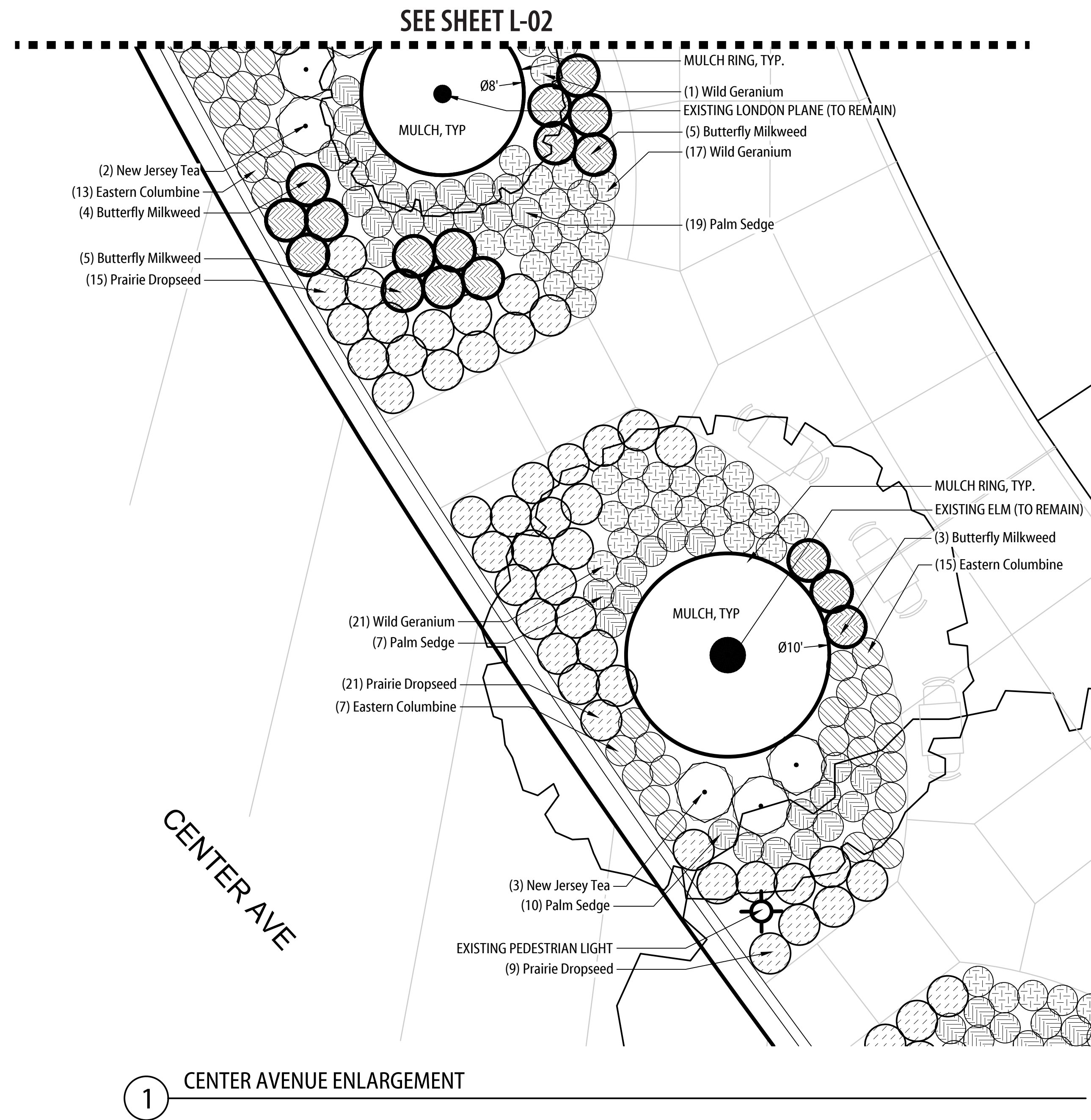
Village of Lake Bluff, Illinois  
**Scranton Ave Block 2 Plantings and Plaza**

ISSUED FOR BID - (L-02) Landscape Plan Enlargements



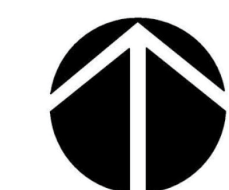
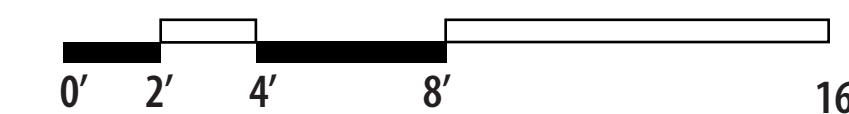
April 4, 2024





Village of Lake Bluff, Illinois  
**Scranton Ave Block 2 Plantings and Plaza**

ISSUED FOR BID - (L-03) Landscape Plan Enlargements



April 4, 2024



## PLANT SCHEDULE

SYMBOL	QTY	COMMON NAME	BOTANICAL NAME	SIZE	CONTAINER	SPACING
<b>SHRUBS</b>						
	31	New Jersey Tea	Ceanothus americanus	24" spr.	CG	36" O.C.
<b>PERENNIALS &amp; ORNAMENTAL GRASSES</b>						
	43	Black-eyed Susan	Rudbeckia amplexicaulis	1 gal.	CG	24" o.c.
	57	Butterfly Milkweed	Asclepias tuberosa	1 gal.	CG	24" o.c.
	97	Eastern Columbine	Aquilegia canadensis	1 gal.	CG	18" o.c.
	201	Palm Sedge	Carex muskingumensis	1 gal.	CG	18" o.c.
	249	Prairie Dropseed	Sporobolus heterolepis	1 gal.	CG	24" o.c.
	20	Switch Grass	Panicum virgatum	1 gal.	CG	30" o.c.
	160	Wild Geranium	Geranium maculatum	1 gal.	CG	18" o.c.

### SOIL AMENDMENTS/TOP DRESSING

120 CU YD	PLANTING SOIL MIX, 24"
7 CU YD	TOPSOIL AMENDMENT, 2"
7 CU YD	MULCH, 3"
16 CU YD	MUSHROOM COMPOST, 2"

## General Planting Notes

### GENERAL CONDITIONS

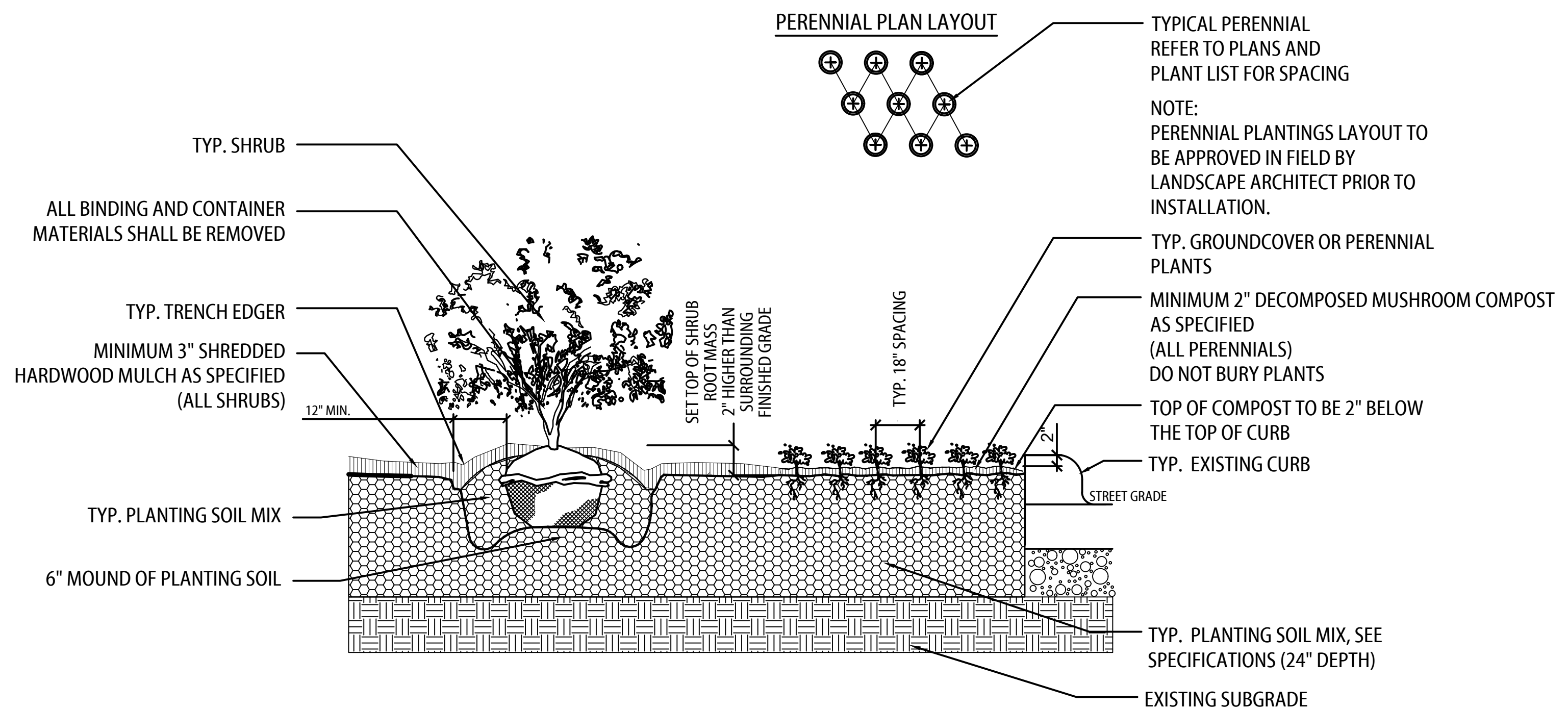
- Contractor shall familiarize themselves with all landscape plans, details specifications prior to commencement of work. Any questions or concerns shall be directed to Project Engineer or Landscape Architect in writing prior to landscape work commencement.
- The Landscape Contractor shall keep all areas clean and orderly at all times.
- The Landscape Contractor shall keep all roadways and walkways clear of mud and debris that result from landscape operations.

### SITE GRADING & DRAINAGE

- All grading, drainage, and utilities shall be evaluated in the field for conflict points. Landscape Architect shall review and approve prior to finished grading.
- All grading and drainage shall be properly pitched to existing or proposed drainage inlets or structures. Landscape Architect shall field verify and approve.

### SOIL & PLANTING MIX

- Topsoil shall be clean, pulverized soil from an acceptable source. Topsoil shall be free of debris, stones, and other material not more than one inch (1") diameter in size. Contractor shall provide the Landscape Architect with receipt of soil source and soil test results from a qualified lab upon request.
- It is anticipated that all planting areas shall be thoroughly tilled as directed in the specifications. All on-site topsoil shall be amended and reused as approved, or removed off-site and disposed of properly. New planting soil mix consisting of pulverized topsoil and mushroom compost shall be installed and properly compacted to the depths noted in the following specifications and landscape planting details.
- Clean topsoil mix should have a tested and approved pH of 6.0 -- 7.0
- The Landscape Contractor shall prepare all at grade planting bed areas by adding soil amendments to approved on-site or imported topsoil mix in the following quantities:  
three (3) parts topsoil, one (1) part peat, and one (1) part sand
- All excess materials and spoils resulting from the landscape work shall be legally disposed of off-site by the Landscape Contractor.



## 1 SHRUB AND PERENNIAL PLANTING

SCALE: NTS

### PLANTING STANDARDS

- All plant material shall be top-quality grade, free of defects, and meet accepted horticultural standards established by the American Nurserymen's Association (AAN) and as deemed appropriate by Landscape Architect. Landscape Architect shall have the right to reject any, and all, plant material delivered to the site that does not meet acceptable standards.
- Sizes shown on plant schedule are minimum acceptable sizes.
- All plants to be balled-in-burlap or container-grown as specified in plant schedule. All plastic root wrapping material shall be removed.
- All new and transplanted plants to be sprayed with an antidesiccant within twenty-four (24) hours after planting. Antitranspirant shall be "Wiltpruf" or an approved equal.
- Landscape Architect shall field verify and approve all final staked shrub, and perennial bed locations prior to installation.
- The Landscape Contractor shall repair to its original condition any plant material which becomes damaged as a result of landscape operations.
- Landscape Architect shall approve all plant materials for quality, condition and specified sizes. Plant material shall be approved at nursery location, during tagging or before removal and transport to job site. Shrubs, perennials and groundcovers shall be approved at job site prior to installation.

### FERTILIZER & MULCHING

- Prior to mulching tree and shrub planting areas, apply time-release fertilizer by broadcasting over entire planting areas. Rate is to manufacturer's recommendations. Fertilizer is to have no less than 10% available phosphoric acid, and 3-8% total nitrogen soluble potash.
- All plantings shall receive a slow-release fertilizer with a ratio of 10/10/10.
- All planting beds shall receive a minimum of (2") thick decomposed mushroom compost top-dressing.

### MAINTENANCE & WARRANTIES

- All plants shall be thoroughly watered in at time of planting and watered and maintained throughout construction until final acceptance by owner. Contractor shall water all plants immediately after planting. Flood plants twice during the first twenty-four (24) hours after planting.
- Landscape contractor shall warranty all shrubs and perennials under this contract will be healthy and in flourishing condition of active growth one year from the date of final acceptance. Landscape contractor shall be responsible to maintain all plantings from the time of installation through substantial completion and throughout the one-year warranty period. Plant maintenance includes regular waterings throughout the growing season, weed removal, mulch replenishment and plant replacement as required. Upon completion of the one-year warranty period, the project shall be delivered to the village with established plantings in healthful conditions.
- Guarantee specifications are as follows: the contractor shall provide the owner with a bonded written one-year warranty agreement beginning on the first day of the owner's possession. This agreement shall provide for the replacement of dead or dying plant material. The contractor shall provide the owner with a typewritten list of specific maintenance instructions for each type of plant installed with the written agreement and bond.